



## 2011 IFMAR 1/8th IC Track World Championship Status Report

April 7<sup>th</sup> to April 17<sup>th</sup> (tentative)  
1 Speedway Boulevard  
Homestead, Florida USA

### TABLE OF CONTENTS

1. Purpose
2. Program
3. Facilities
4. Administration
5. Hospitality
6. Time Keeping
7. Race Officials
8. The Venue

### APPENDIX

#### TABLE OF FIGURES

- Figure 1. View of Homestead RC Raceway track  
Figure 2. View of Drivers Stand and Hot Race Pit Area  
Figure 3. View of 1/8 Scale Track Racing  
Figure 4. View of Tire Truing Area  
Figure 5. View of Covered Pit Area #1  
Figure 6. View of Covered Pit Area #2  
Figure 7. View of Registration Area  
Figure 8. View of Technical Inspection Area  
Figure 9. View of ID Badges  
Figure 10. Miami International Airport to Homestead RC Raceway Map  
Figure 11. Greater Homestead/Miami Area Map  
Figure 12. View of Electricity Plugs  
Figure 13. Race Program Daily Detail
- Figure X. View of Race Control/Referee Area  
Figure X. View of Team Managers Meeting Area  
Figure X. View of IFMAR/Jury Meeting Area  
Figure X. View of Press Area  
Figure X. View of Pre Race Staging Area  
Figure X. View of Engine Tuning Area  
Figure X. View of Engine Break in Area  
Figure X. Motels near Homestead RC Raceway  
Figure 11. Greater Homestead/Miami Area Map

## 1 Purpose

The purpose of this Status Report is to provide IFMAR officials preliminary information for their review and consideration in their evaluation of Homestead RC Raceway's bid to host the 2011 IFMAR 1/8 IC Track World Championship.

## 2 Program

The event will begin on Thursday April 7th, and conclude Sunday April 17th. The racing program will conclude on Saturday April 16th. Sunday April 17<sup>th</sup>, is reserved as a spare day as contingency for unforeseen events that may cause a delay in the racing program. The awards presentation and banquet will take place on Sunday April 17th.

The event track will be closed for practice during the two weeks preceding the start of frequency controlled practice as per IFMAR rule 2.2 of the 1/8th I.C. Track Racing and Technical Rules.

### Pre-World Championship

The Pre-World event will be held from December 9, to December 12, 2010. Information regarding this event including rules and entry forms will be posted in the World Championship website. [www.xxx.xxx](http://www.xxx.xxx)

April 7, to April 17,		April 2011														
		T	W	Th	F	S	S	M	T	W	Th	F	S	S	M	T
Event day		-2	-1	1	2	3	4	5	6	7	8	9	10	11		
Day of the month		5	6	7	8	9	10	11	12	13	13	15	16	17	18	19
<b>Activity</b>																
<b>Frequency Controlled Practice</b>																
<b>Controlled Heat Practice and Opening Ceremony</b>																
<b>Qualifying Rounds</b>																
<b>Lower Christmas Tree finals - 1/8th and lower</b>																
<b>Higher Christmas Tree finals - 1/4th and Higher</b>																
<b>Spare Day, Award Presentation and Banquet</b>																

See Figure "13" for a detailed race program

### **3 Facilities**

Homestead RC Raceway is located on the grounds of the world famous Homestead-Miami Speedway. The race track has a racing line length of 1000 feet/304 meters with a straightaway of 285 feet/89 meters.



Figure 1: View of Homestead RC Raceway



Figure 2. View of Drivers Stand and Hot Race Pit Area





Figure 3: 1/8 Track Action



Figure 4: Tire Truing Area



Figure 5: Covered Pit Area # 1



Figure 6: Covered Pit Area #2





Figure 7: Registration Area



Figure 8: Technical Inspection Area

Homestead RC Raceway has the following amenities.

- \*Covered pit area with lights and ceiling fans for more than 150 drivers.
- \*Paved loading/unloading zone for easy access to the covered pit area.
- \*Large secure parking area designated for drivers, mechanics, and officials
- \*Engine tuning stations conveniently located next to the covered pit area.
- \*Designated engine break in area.
- \*Designated pre-race staging area for qualifying and finals.
- \*Large permanent Men and Women restroom and toilet facilities.
- \*Designated covered Team Managers area.
- \*Designated Press area.
- \*Designated IFMAR only area for business and jury meetings.
- \*Bleacher seating area for spectators.
- \*Bleacher seating area for drivers and mechanics.

#### **4 Administration**

All inquiries about the event should be directed to:

Doug McNeely-Event Organizer

[xxxxx@xxxxx.com](mailto:xxxxx@xxxxx.com)

All industry specific media including leading RC publications and RC websites will be invited to the event. In addition local radio, TV, and print media will be notified of the event. All race sponsorship will be handled through Homestead RC Raceway .

The venue will have dual public announcement systems, one of which will be designated for official communications only. The venue is also equipped with redundant timing Systems. Two timing loops installed and a third to be available as back-up.

Opening ceremony will be held with country flags and national anthems.

Closing ceremony and banquet will be held offsite, with food, and fun.

Homestead RC Raceway will submit at least three brands of fuel to IFMAR for approval as the event racing fuel.

Fuel storage and distribution plan is now approved by the pertinent local authorities.

The following colored badges will provide access to pits and tracks:

Orange badges / team Managers

Blue badges / drivers

Yellow badges / mechanics

Red badges / Press

Green badges / IFMAR Officials

Black badges / Event Sponsor

White badges / Driver Family

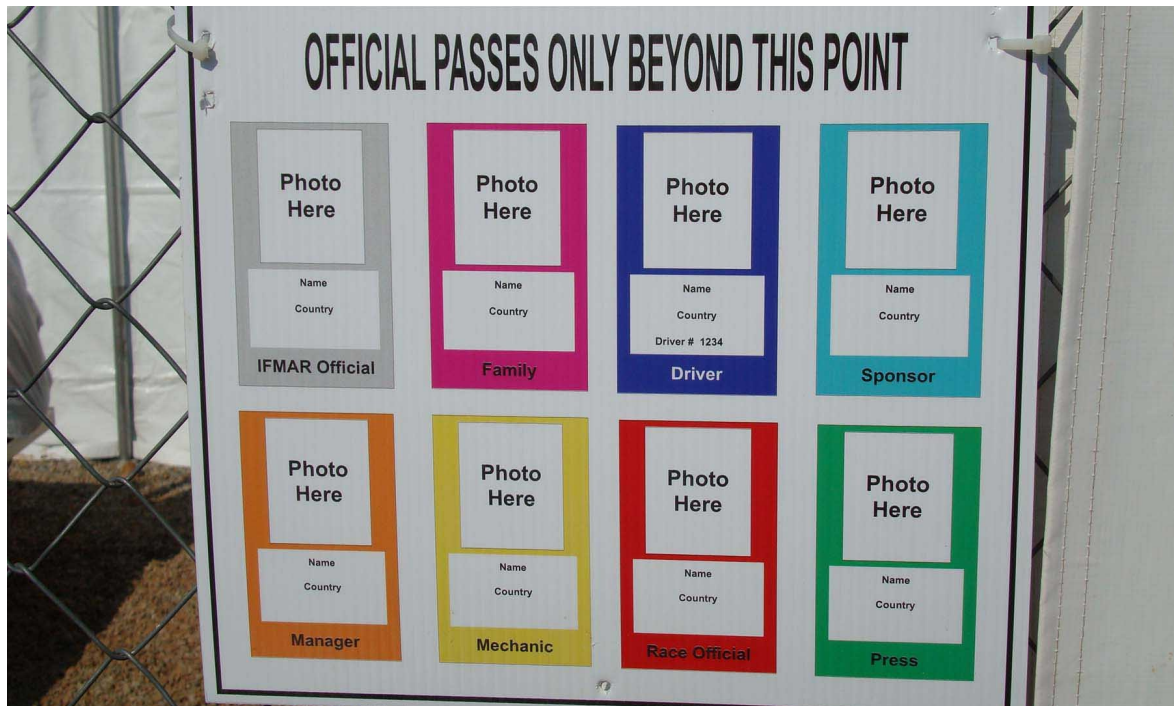


Figure 9: View of ID Badges

The following are frequencies that are permitted:

27 MHz: only frequencies 26.995, 27,045, 27,145 27,195 and 27, 255.

75 MHz: All channels 61 thru 90

50 MHz: Channels 00, 02, 06 and 08

53 MHz: Frequencies 53,100 thru 53, 800 MHz

2.4 GHz : All DSS and Spectrum systems

Drivers using 50 MHz radios must have an FCC Amateur Radio License issued for that radio in their possession.



## 5 Hospitality

Things to do around Homestead and Greater Miami Area

- [City of Homestead](http://en.wikipedia.org/wiki/City_of_Homestead) more info at [http://en.wikipedia.org/wiki/City\\_of\\_Homestead](http://en.wikipedia.org/wiki/City_of_Homestead)
- [South Beach](http://en.wikipedia.org/wiki/South_Beach) more info at [http://en.wikipedia.org/wiki/South\\_Beach](http://en.wikipedia.org/wiki/South_Beach)
- [Ocean Drive](http://en.wikipedia.org/wiki/Ocean_Drive_%28South_Beach%29) more info at [http://en.wikipedia.org/wiki/Ocean\\_Drive\\_%28South\\_Beach%29](http://en.wikipedia.org/wiki/Ocean_Drive_%28South_Beach%29)
- [Calle Ocho](http://en.wikipedia.org/wiki/Calle_Ocho#Calle_Ocho) more info at [http://en.wikipedia.org/wiki/Calle\\_Ocho#Calle\\_Ocho](http://en.wikipedia.org/wiki/Calle_Ocho#Calle_Ocho)
- [Lincoln Road](http://en.wikipedia.org/wiki/Lincoln_Road) more info at [http://en.wikipedia.org/wiki/Lincoln\\_Road](http://en.wikipedia.org/wiki/Lincoln_Road)
- [Downtown Miami](http://en.wikipedia.org/wiki/Downtown_Miami) more info at [http://en.wikipedia.org/wiki/Downtown\\_Miami](http://en.wikipedia.org/wiki/Downtown_Miami)
  
- [Bal Harbour Shops](http://en.wikipedia.org/wiki/Bal_Harbour_Shops) more info at [http://en.wikipedia.org/wiki/Bal\\_Harbour\\_Shops](http://en.wikipedia.org/wiki/Bal_Harbour_Shops)
- [Dolphin Mall](http://en.wikipedia.org/wiki/Dolphin_Mall) more info at [http://en.wikipedia.org/wiki/Dolphin\\_Mall](http://en.wikipedia.org/wiki/Dolphin_Mall)
- [Aventura Mall](http://en.wikipedia.org/wiki/Aventura_Mall) more info at [http://en.wikipedia.org/wiki/Aventura\\_Mall](http://en.wikipedia.org/wiki/Aventura_Mall)
- [Freedom Tower](http://en.wikipedia.org/wiki/Freedom_Tower_%28Miami%29) more info at [http://en.wikipedia.org/wiki/Freedom\\_Tower\\_%28Miami%29](http://en.wikipedia.org/wiki/Freedom_Tower_%28Miami%29)
  
- [Bayside Marketplace](http://en.wikipedia.org/wiki/Bayside_Marketplace) more info at [http://en.wikipedia.org/wiki/Bayside\\_Marketplace](http://en.wikipedia.org/wiki/Bayside_Marketplace)
- [Star Island](http://en.wikipedia.org/wiki/Star_Island_%28Florida%29) more info at [http://en.wikipedia.org/wiki/Star\\_Island\\_%28Florida%29](http://en.wikipedia.org/wiki/Star_Island_%28Florida%29)

Parks and Sports Venues around Homestead and Greater Miami Area

- [Homestead-Miami Speedway-Homestead RC Raceway](http://en.wikipedia.org/wiki/Homestead-Miami_Speedway-Homestead_RC_Raceway) more info at [http://en.wikipedia.org/wiki/Homestead-Miami\\_Speedway](http://en.wikipedia.org/wiki/Homestead-Miami_Speedway)
- [Everglades National Park](http://en.wikipedia.org/wiki/Everglades_National_Park) more info at [http://en.wikipedia.org/wiki/Everglades\\_National\\_Park](http://en.wikipedia.org/wiki/Everglades_National_Park)
- [Biscayne National Park](http://en.wikipedia.org/wiki/Biscayne_National_Park) more info at [http://en.wikipedia.org/wiki/Biscayne\\_National\\_Park](http://en.wikipedia.org/wiki/Biscayne_National_Park)
- [LandShark Stadium](http://en.wikipedia.org/wiki/LandShark_Stadium)- [Miami Dolphins](http://en.wikipedia.org/wiki/Miami_Dolphins), [Miami Hurricanes](http://en.wikipedia.org/wiki/Miami_Hurricanes) (football), and [Florida Marlins](http://en.wikipedia.org/wiki/Florida_Marlins) (baseball) more info at [http://en.wikipedia.org/wiki/LandShark\\_Stadium](http://en.wikipedia.org/wiki/LandShark_Stadium)
- [American Airlines Arena](http://en.wikipedia.org/wiki/American_Airlines_Arena)- [Miami Heat](http://en.wikipedia.org/wiki/Miami_Heat) more info at [http://en.wikipedia.org/wiki/American\\_Airlines\\_Arena](http://en.wikipedia.org/wiki/American_Airlines_Arena)
- [Calder Race Course](http://en.wikipedia.org/wiki/Calder_Race_Course) more info at [http://en.wikipedia.org/wiki/Calder\\_Race\\_Course](http://en.wikipedia.org/wiki/Calder_Race_Course)

There are an abundance of motels in the Homestead and Florida City Area that will be close to Homestead RC Raceway. The listed Motels are only some of the motels that are within a five miles/8 kilometers of Homestead RC Raceway. We suggest an internet search using “Motels Homestead Miami Speedway” for an even larger selection of motels and links for special rates.

Motels near Homestead RC Raceway

Super 8 Florida City/Homestead

1202 N Krome Ave

Florida City, FL 33034-2428 US

[http://www.super8.com/Super8/control/Booking/property\\_info?propertyId=03176](http://www.super8.com/Super8/control/Booking/property_info?propertyId=03176)

Tel: 305-245-0311

Travel Lodge Florida City/Homestead

409 Southeast First Ave

Florida City, FL 33034 US

[http://www.travelodge.com/Travelodge/control/Booking/property\\_info?propertyId=08844](http://www.travelodge.com/Travelodge/control/Booking/property_info?propertyId=08844)

Tel: 305-248-9777

Best Western Florida City  
411 S Krome Avenue,  
Florida City, Florida, 33034-4913, US  
<http://www.bestwesternflorida.com/hotels/best-western-gateway-to-the-keys/>  
Tel: 305-246-5100

Holiday Inn Express Hotel & Suites  
32500 South Dixie Hwy.  
Florida City, FL 33034 US  
<http://www.ichotelsgroup.com/h/d/ex/1/en/hotel/fcffl?&stopredirect=true>  
305-247-3414

Econo Lodge  
553 NE 1 Ave.,  
Florida City, FL 33034 US  
[http://www.econolodge.com/hotel-florida\\_city-florida-FL559?promo=gglocal](http://www.econolodge.com/hotel-florida_city-florida-FL559?promo=gglocal)  
305-248-9300

Comfort Inn 333 S.E. 1st Ave. US Hwy. #1, Florida City, FL, US, 33034  
333 SE 1<sup>st</sup> Ave. US Hwy #1  
Florida City, FL 33034 US  
[http://www.comfortinn.com/hotel-florida\\_city-florida-FL432?promo=gglocal](http://www.comfortinn.com/hotel-florida_city-florida-FL432?promo=gglocal)  
305-248-4009

**6 Time Keeping**  
XXXXXX

**7 Race Officials**

Event Organizer	Doug McNeely
Race Director	Bob Ingersoll
Assistant Race Director	Rich Browne
Chief Technical Inspector	Rick Davis
Official Time Keeper	TBD
Head of Facilities	Johnny Wong
IFMAR Referee	TBA by IFMAR
ROAR Referee	TBA by ROAR
Country Referee	TBA by ROAR

## **8 The Venue**

Homestead RC Raceway is located in Homestead, Florida just south of the Greater Miami area. The facility is inside the gates of the world famous Homestead Miami Speedway and offers all the speed and excitement of the bigger race cars.

### **Miami International Airport**

Miami International Airport is the closest airport. It is only a 40 minute drive south, about 25 miles/40 kilometers to Homestead RC Raceway. This airport is serviced by many airline carriers from all over the world. All major rental car companies are available from this airport.

Miami International Airport serves as the primary international airport of the Miami Area. One of the busiest international airports in the world, Miami International Airport caters to over 35 million passengers a year. Identifiable locally, as well as several worldwide authorities, as MIA or KMIA. Miami International is the United States' third largest international port of entry for foreign air passengers and is the seventh largest such gateway in the world. The airport's extensive international route network includes non-stop flights to over seventy international cities in North and South America, Europe, Asia, and the Middle East.

Directions from Airport and or Florida Turnpike: Leave Miami International Airport, get on the Florida Turnpike headed South (821) to Homestead. Once you are on the Turnpike continue South about 25 to 30 minutes and you will be approaching the Homestead area.

Get off the Turnpike at Exit 6, which is the SW 137 Ave./Speedway Boulevard exit. SW 137 Ave. and Speedway Boulevard are the same road. Go South on this road for about 4 miles/6.5 kilometers. You will Homestead Miami Speedway as you approach. The complex is huge you can not miss it.

When you are real close to the Speedway buildings you will see SW 336 Street, make a left turn, drive past the main entrance, you will see Homestead RC Raceway on your right and follow signs for unloading and parking.



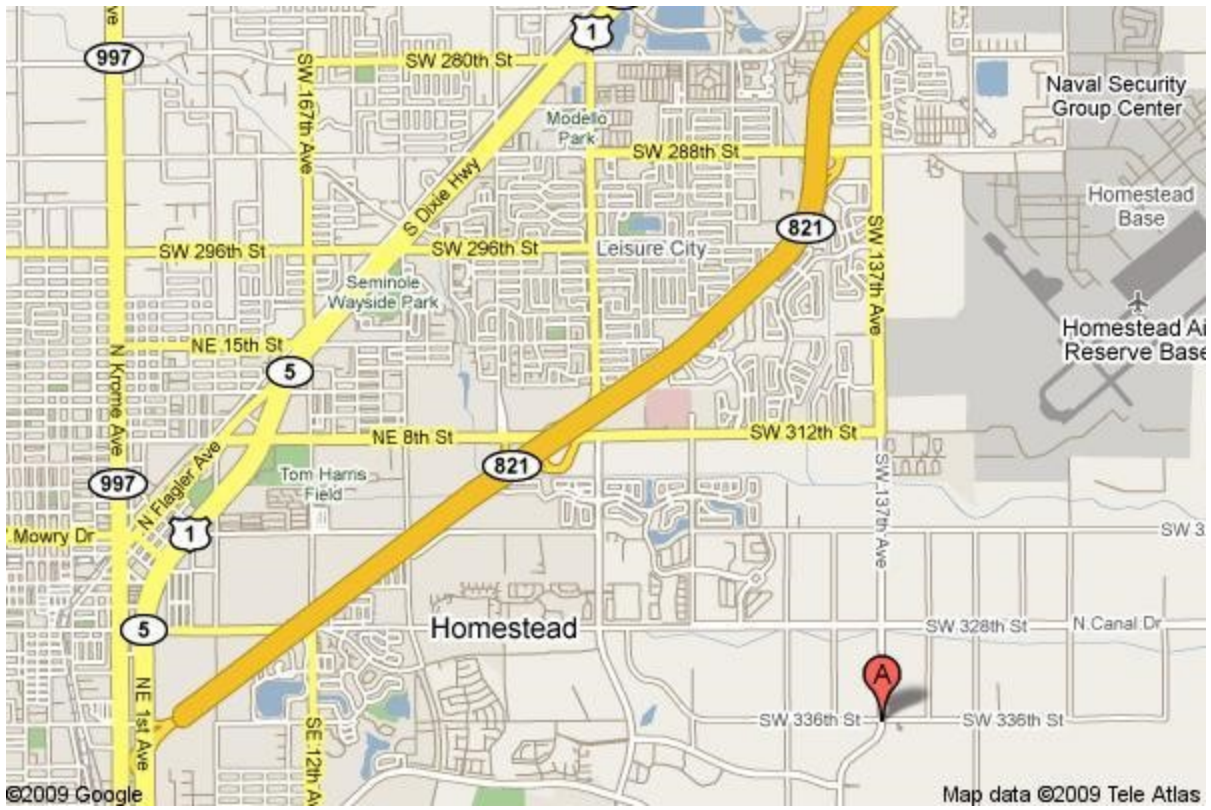


Figure 10: Miami International Airport to Homestead RC Raceway Map

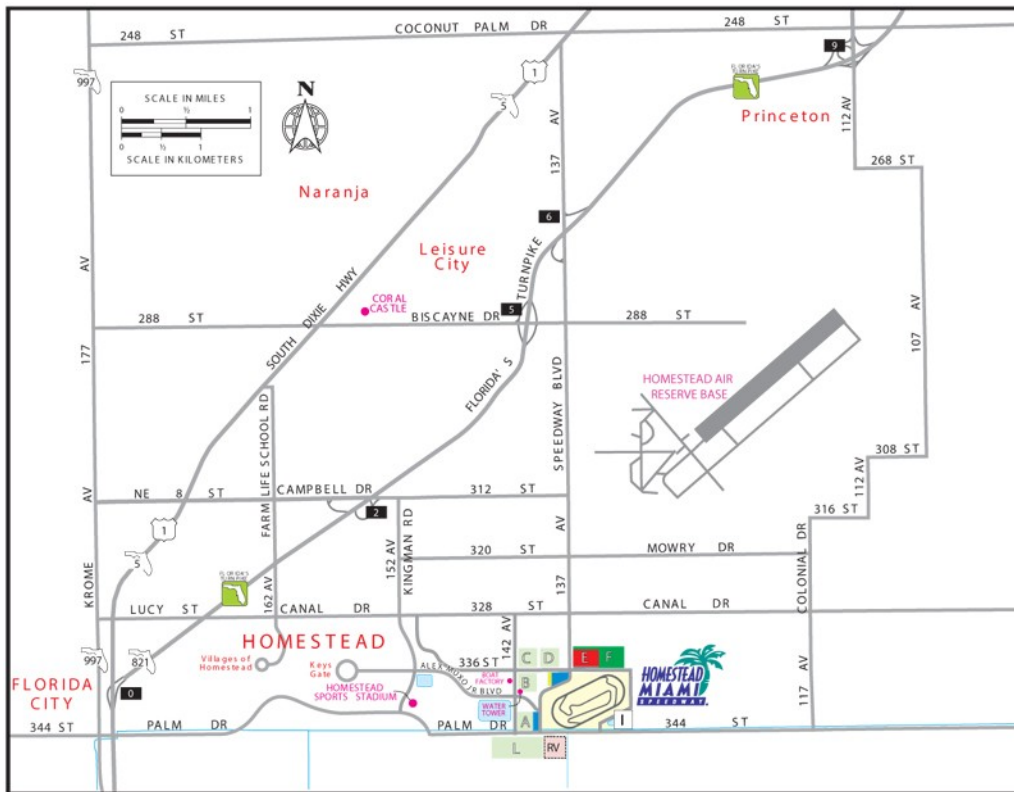


Figure 11: Greater Homestead/Miami Area Map

United States AC Power, Plugs and Outlets Standard

The standard for voltage and frequency in the United States is 110-120 volts at a frequency of 60 Hz, which uses plugs and outlets as shown in the pictures below. Make sure your equipment operates at the above noted voltage/frequency and, if necessary, that you have the necessary plug adapters.



Figure 12: View of Electricity Plugs

## Visa Requirements

International visitors add greatly to our nation's cultural, education and economic life. We continue the proud tradition of welcoming visitors to the United States, with secure borders and open doors. Most Canadian citizens and many citizens from Visa Waiver Program countries can come to the U.S. without a visa if they meet certain requirements.

Visa waiver travelers from ALL 35 Visa Waiver Program countries must present a machine-readable passport at the U.S. port of entry to enter the U.S. without a visa, otherwise a U.S. visa is required.

Other foreign citizens will need a nonimmigrant visa.

## **IMPORTANT:**

**As of January 12, 2009, a valid Electronic System for Travel Authorization (ESTA) approval is required for all Visa Waiver Program (VWP) to travel to the United States.**

The Department of Homeland Security, ESTA is a free, automated system used to determine the eligibility of visitors to travel to the United States under the VWP.

Additional information on Visa Waiver Program and other requirements can be found at [http://www.travel.state.gov/visa/temp/without/without\\_1990.html](http://www.travel.state.gov/visa/temp/without/without_1990.html)

The above information is intended to make you aware of US visa requirements. It is HIGHLY RECOMMENDED that you seek the latest visa requirements from your local US Consulate or at [http://travel.state.gov/visa/temp/temp\\_1305.html](http://travel.state.gov/visa/temp/temp_1305.html).

**Advance planning can smooth the ESTA or visa application process for you. Apply for your ESTA or Visa well in advance of your travel!**







April 7-17 2011		Th	F	S	S	M	T	W	Th	F	S	S
IFMAR 1/8 IC TRack World Championship		1	2	3	4	5	6	7	8	9	10	11
Event Day	Day of the month April	7	8	9	10	11	12	13	14	15	16	17
Activity continued												
Qualifying Round 5 Group A												
	Heat 1 09:30											
	Heat 2 09:45											
	Heat 3 10:00											
	Heat 4 10:15											
	Heat 5 10:30											
	Heat 6 10:45											
	Heat 7 11:00											
Group B												
	Heat 8 11:30											
	Heat 9 11:45											
	Heat 10 12:00											
	Heat 11 12:15											
	Heat 12 12:30											
	Heat 13 12:45											
	Heat 14 13:00											
	Heat 15 13:15											
Qualifying Round 6 Group A												
	Heat 7 13:30											
	Heat 6 13:45											
	Heat 5 14:00											
	Heat 4 14:15											
	Heat 3 14:30											
	Heat 2 14:45											
	Heat 1 15:00											
Group B												
	Heat 15 15:30											
	Heat14 15:45											
	Heat 13 16:00											
	Heat 12 16:15											
	Heat 11 16:30											
	Heat 10 16:45											
	Heat 9 17:00											
	Heat 8 17:15											
Lower Finals from 1/1024th to 1/8th												
	1/1024 B 08:00											
	1/1024 A 08:30											
	1/512 B 09:00											
	1/512 A 09:30											
	1/256 B 10:00											
	1/256 A 10:30											
	1/128 B 11:00											
	1/128 A 11:30											
Lunch Break 12:00 to 13:30												
	1/64 B 13:30											
	1/64 A 14:00											
	1/32 B 14:30											
	1/32 A 15:00											
	1/16B 15:30											
	1/16A 16:00											
	1/8B 16:30											
	1/8A 17:00											
Higher Finals 1/4th and Higher												
	1/4 B 10:00											
	1/4 A 10:30											
Practice - 4 direct qualified finalsts 11:00 to12:00												
Lunch Break 12 to 13:30												
	1/2 B 13:30											
	1/2A 14:00											
Finalists Drivers presentation 15:00												
Warm-up practice 15:15												
Trial start 15:20												
Start 15:30												
End of Race 16:30												
Unofficial publication of race results 16:40												
End of protest time 17:00												
Track award ceremony 17:10												
Award presentation 19:00												
Spare Day												

Figure 13: Race Program Daily Detail

